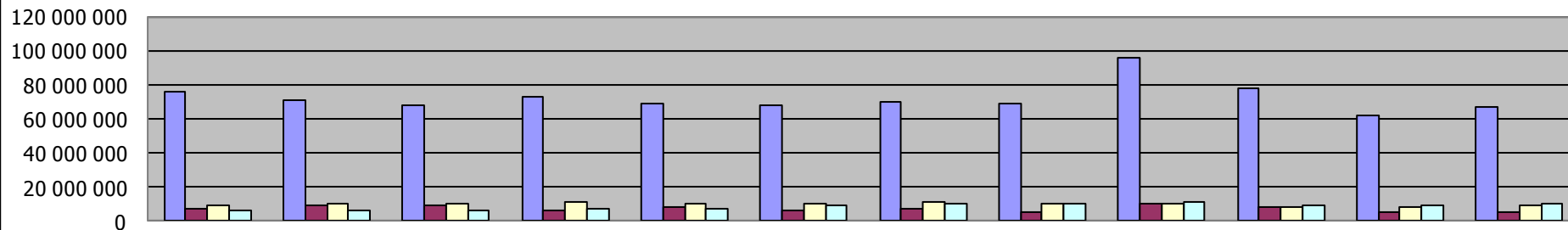
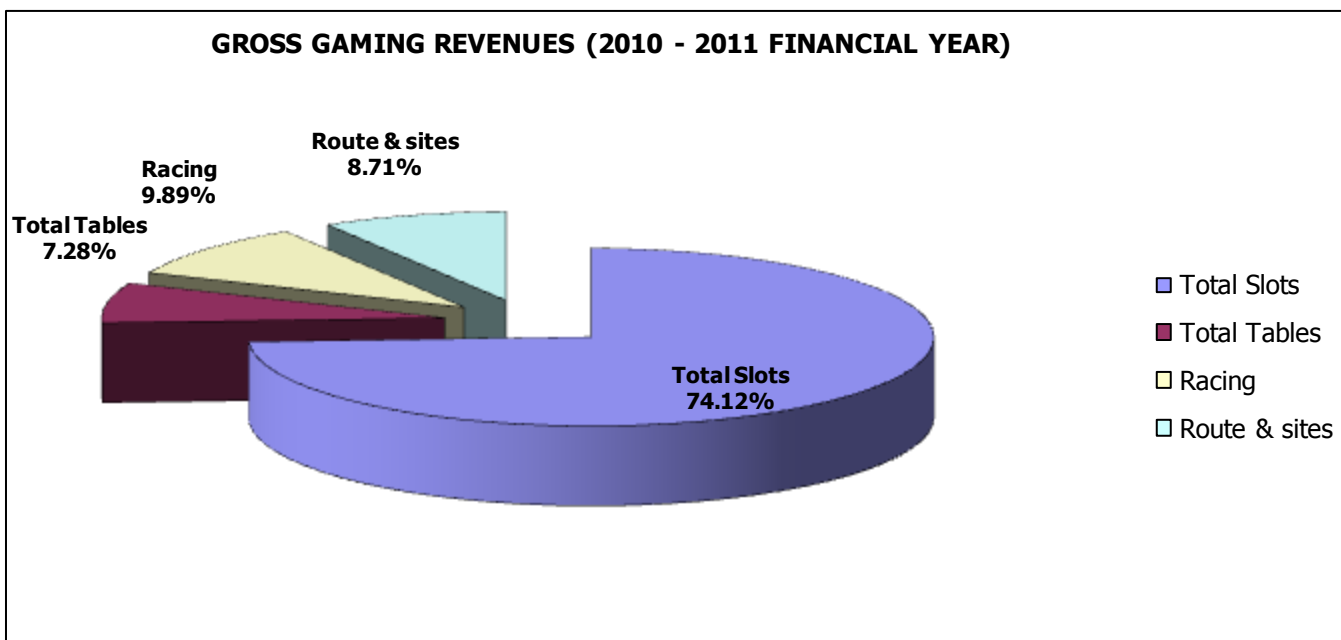


GROSS GAMING REVENUES (2010 - 2011 FINANCIAL YEAR)



	Apr-10	May-10	Jun-10	Jul-10	Aug-10	Sep-10	Oct-10	Nov-10	Dec-10	Jan-11	Feb-11	Mar-11
Total Slots	75 529 413	70 515 150	68 023 800	72 894 959	69 306 130	68 435 893	70 249 466	68 872 863	95 751 513	78 038 130	62 275 275	66 976 425
Total Tables	7 001 174	8 841 446	9 492 654	5 846 230	8 094 686	6 246 218	6 532 903	4 668 411	10 499 093	7 843 748	4 981 555	5 127 272
Racing	9 194 008	9 996 999	9 706 584	10 556 742	10 213 245	9 975 008	11 366 528	9 648 026	10 029 022	7 918 988	8 229 686	8 862 656
Route & sites	6 149 274	6 468 597	6 381 560	7 401 255	6 916 534	9 299 154	9 649 763	9 729 939	11 433 259	9 390 765	8 968 474	10 082 373

GROSS GAMING REVENUES (2010 - 2011 FINANCIAL YEAR)



*Revenue above was generated from the listed sites and devices

SITES & DEVICES 2010-2011

		April	May	June	July	Aug	Sept	Oct	Nov	Dec	Jan	Febr	March
Slots	Casinos	1787	1787	1787	1787	1793	1783	1783	1790	1803	1806	1806	1806
	LPM's	596	596	632	596	635	941	1017	934	934	907	896	945
Tables	Casinos	56	56	55	57	57	57	57	57	57	55	55	55
Sites	Horse-racing	35	35	35	35	35	35	35	37	37	37	37	37
	LPM's	110	110	110	110	118	165	162	162	159	160	157	157